



Optional Equipment

[click here to return to full product brochure](#)

APPLICATIONS:

Designed to exhaust fumes from highly corrosive environments such as laboratories, chemical plants, hospitals, research facilities, and universities.

MATERIALS:

Single block high density, UV-treated and recyclable polypropylene is molded and has no welded joints for ultimate airflow efficiency and strength. The forward-curved centrifugal style impeller, fan wheel, motor shaft bushing, and hub cap are all constructed of injection molded High Density Polypropylene.

COMPLIANCE:

Our centrifugal fans perform in accordance with AMCA 210-85 and ISO 5801.

TotalExhaust Option: Centrifugal Exhaust Fan

“Increase Containment and Ensure Personnel Safety”



TEP-30

Air Science offers centrifugal fans as an available option on TotalExhaust Fume Hoods.

Our all-polypropylene exhaust fans are available in a variety of configurations and are built to withstand the most demanding conditions.

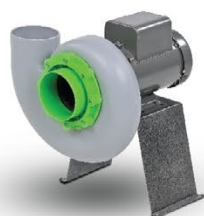
The fans come in four sizes ranging from 5" up to 10" inlet.

VERSATILE

Chemical and corrosion-resistant plastic impeller and casing construction are suitable for installation in highly caustic conditions as well as general laboratory use.

Fan configuration options, general specifications, and performance curves are provided herein. All physical dimensions can be customized to meet your application.

Fan size should be determined by a qualified HVAC technician.



TEP-15



TEP-20



TEP-25



TEP-30

CENTRIFUGAL EXHAUST FAN SPECIFICATIONS

Air Science Model	TEP-15	TEP-20	TEP-25	TEP-30
Inlet Outside Diameter (in / mm)	4.92" / 125 mm	6.3" / 160 mm	7.87" / 200 mm	9.84" / 250 mm
Outlet Outside Diameter (in / mm)	4.92" / 125 mm	6.3" / 160 mm	8.62" / 219 mm	10.9" / 277 mm
Impeller Diameter (in / mm)	5.9" / 150 mm	7.87" / 200 mm	9.84" / 250 mm	11.81" / 300 mm
Horsepower (motor)	.33	.33	.75	2
Noise Level (1725 RPM models) (dB (A))	54	56	58	54

Power Supply Options

Single Phase 115/230V, 50/60Hz Full Load Amp Rating (FLA)	5.2 / 2.6	5.2 / 2.6	8.2 / 4.2	18.6 / 9.3
Three Phase 230/460V, 50/60Hz Full Load Amp Rating (FLA)	1.7 / 0.8	1.7 / 0.8	3.4 / 1.7	5.8 / 2.9

Figure 1: Static pressure, Models TEP-15 and TEP-20

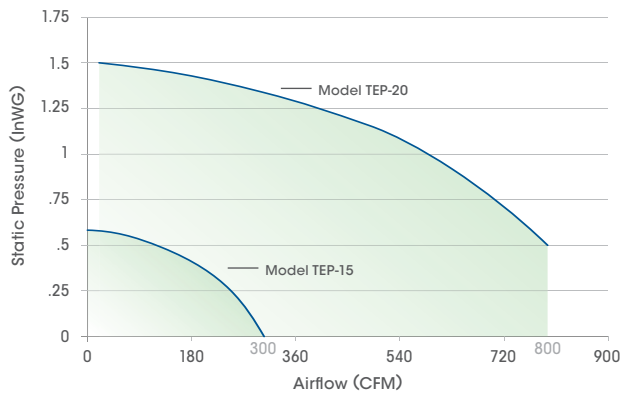
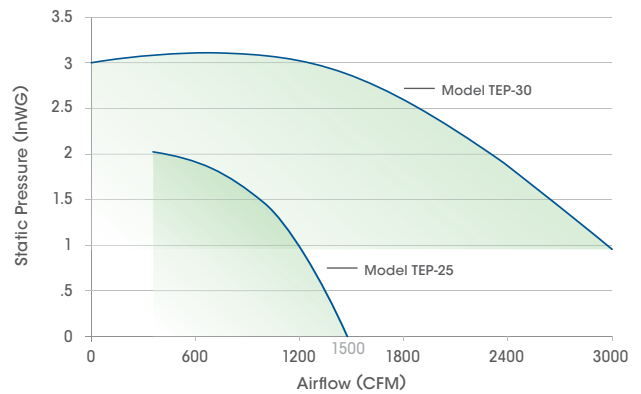


Figure 2: Static pressure, Models TEP-25 and TEP-30



ROTATION AND DISCHARGE FOR CENTRIFUGAL FANS

Standard Position

Optional, Field Adjustable Positions

CCW 360°	CCW 45°	CCW 90°	CCW 135°	CCW 180°	CCW 225°	CCW 270°	CCW 315°
Counter-Clockwise Up Blast	Counter- Clockwise Top Angular Up Blast	Counter- Clockwise Top Horizontal	Counter- Clockwise Top Angular Down Blast	Counter- Clockwise Down-Blast	Counter- Clockwise Bottom Angular Down Blast	Counter- Clockwise Bottom Horizontal	Counter- Clockwise Bottom Angular Up Blast

¹ Direction of rotation is determined from the drive side of fan. Standard position is CCW 360° Up Blast.

² On single inlet fans, drive side is always considered as the side opposite fan inlet.



120 6th Street • Fort Myers, FL 33907
T/239.489.0024 • Toll Free/800.306.0656 • F/800.306.0677
www.airscience.com

